

May 8, 2016

October 2, 2016



Blue Spruce Riding Club 2016

www.bluespruceridingclub.com



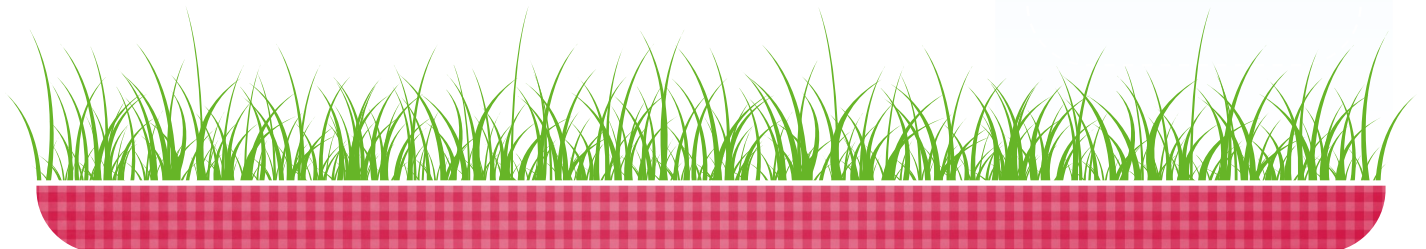
644 DOGWOOD DRIVE
ALBURTIS, PA

Inside

- About Our Club ...2
- Officers.....2
- Event Schedule ...3
- Spring Show Flyer 4
- Fall Gymkhana Flyer.....5
- Obstacle Practice Flyer....8

Important Dates

- 08/28 Trail Obstacle Practice
- 10/02 Gymkhana &
Trail Challenge



2016 BSRC Officers:

President:

Alice Bastian—
610-298-8236

Secretary:

Donna Christ—
610-432-1628

Treasurer:

Naomi Lawhorn—
610-323-5248

Maintenance: Open Office

Show Chairman:

Sue Moss—570-345-0754

Newsletter Editor & Trail Boss—

Charmaine Ropeter—
610-754-7679

Webmaster:

Theresa Reabold—
610-826-5309

Board of Directors 2016:

Chairman of the Board:

Pat Zentner—
610-845-2205

2016 Board Members:

Tina Hunsicker—
610-398-2257

Wayne Burrows—
610-216-4365

Jean Hunsicker—
610-608-5156

Doris Betzenberger—
610-767-2346

About our Club

Dear Sponsors, Patrons and Friends,

We would like to introduce ourselves to you. We are the Blue Spruce Riding Club, Inc. Our goals, as a club, are to gather together people who have a common interest in horses and horseback riding, and to further that interest by the exchange of information and ideas, and the scheduling of meetings, rides and horse shows.

Our clubhouse is located on Dogwood Drive, Alburtis, PA approximately two miles north of Huffs Church. Meetings are usually held the first Sunday of the month, except July, starting at 7:00 pm. Prospective members and quest are welcome to attend. Our Trail News newsletter is sent to members following each meeting.

Blue Spruce is a trail riding club and we have rides, on public land, in various locations the third Sunday of the month. The rides are led by someone familiar with the trails where they are held. This provides horse owners with the opportunity to get acquainted with other trail riders and to enjoy having a variety of places to ride.

Our fund-raising activities are a horse show in the spring and a gymkhana—trail challenge in the fall. These activities depend on the volunteer efforts of the members and we encourage new members to lend their time and talents to these events to insure the continuation of Blue Spruce Riding Club into the future.

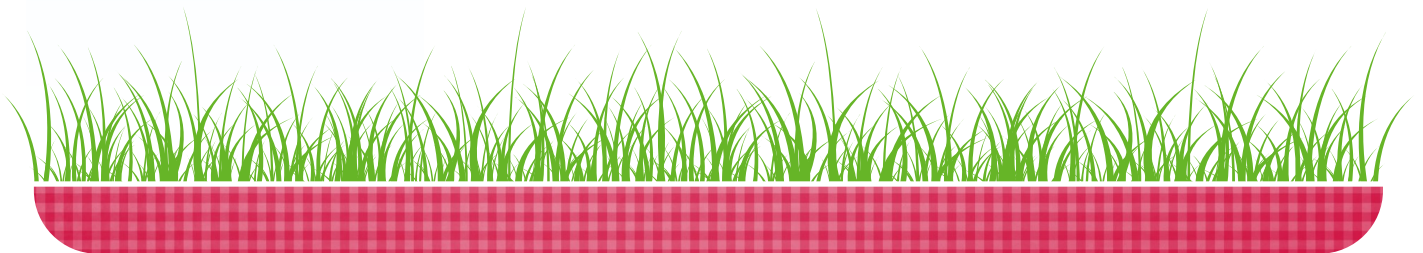
Occasionally we have educational programs at our monthly meetings and social events, such as a night out dinner at a local restaurant.

The annual dues for a single member is \$15.00 and dues for family membership are \$20.00. Family membership include children at 17 and under. Those age 18 and over must be members in their own right. If you are interested in joining our club please contact any of the officers or board members listed at the end of this letter.

We would like to give a special thanks to all of our horse show sponsors and patrons. Without your support our horse shows would not be possible. We wish you well in the coming year and look forward to your continued support and friendship.

Sincerely,

Members of the Blue Spruce Riding Club, Inc.

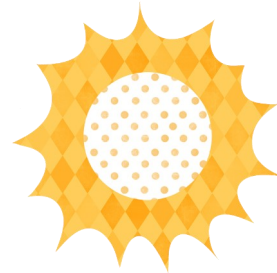


Blue Spruce Grounds

The land Blue Spruce Riding Club uses for its show and gymkhana is private property. For this reason we stress the importance of making sure the property is left the way you found it. Please be courteous and clean up after your horse and yourself so we may

continue to have shows here.

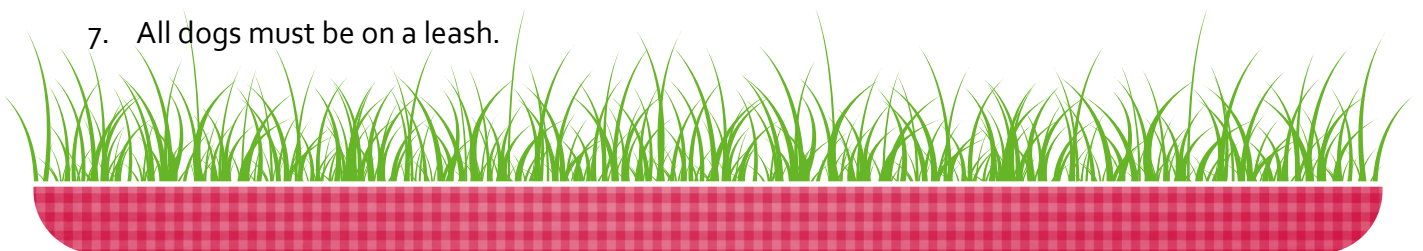
Thank You for your participation



Beginner 14 and under and Beginner 15 and over Trail Classes Sponsored by Carolyn Pennypacker

Blue Spruce Riding Club, Inc. Horse Show & Gymkhana Rules & Regulations

1. The ring will be available for warm-up until 9:30 am
2. Horses may not be ridden at a gait faster than a trot outside of the ring.
3. Horses must walk through gate upon entering and exiting ring.
4. Abusive treatment to horses will not be permitted
5. Hard hats are **REQUIRED** for riders 16 years of age and younger.
6. Boots or shoes with heels are **MANDATORY FOR ALL RIDERS.**
7. All dogs must be on a leash.
8. Show committee reserves the right to combine and/or cancel classes.
9. The decision of the Show Chairperson is FINAL.
10. **NO DRUGS or ALCOHOLIC BEVERAGES ARE PERMITTED ON THE GROUNDS**
11. Trash receptacles are located on the grounds. **PLEASE USE THEM & RECYCLE.**
12. Hay and manure are to be cleaned up by the responsible owner. Wheelbarrow and forks are available.





ERB & HENRY EQUIP., INC.

22-26 Henry Avenue
New Berlinville, Pennsylvania 19545
(610) 367-2169 Ext. 24
Fax (610) 367-6715
www.erbhenry.com

LAWRENCE R. "BUTCH" CLAUSS, JR.
Sales Manager
email@erbhenry.com • Cell: (484) 576-9505

Please let our sponsors know that you saw them here when doing business.

STEVEN R. DADDONA

Certified Farrier



Trims, Hot & Cold Shoeing, Orthopedic Horse Shoeing
Member of P.P.F.A. and A.F.A.

P.O. Box 37
Bernville, PA 19506

Call: (610) 488-7492

**HASCH DAAL CUSTOM EMBROIDERY,
SILK-SCREENING & PROMOTIONAL ITEMS**



**Offers: P.M.S.=
Positive Marketing Solutions**

Deborah Berger

**Deborah@HaschDaal.com
www.HaschDaal.com
PH/FX 610.683.9920**

Thank you for Working With Local Businesses

2016 BSRC Schedule

General Meetings: 7:00 PM

Board Meetings—6:00 pm

*When meeting at Starlight, we
will be having dinner at 6:00
then meeting to follow.*

January 3—at Starlight Diner

February 7—at Starlight Diner

March 6 & Board Meeting

April 3

May 1

May 8—Spring Horse Show

June 5 & Board Meeting

August 7

August 28—Obstacle Practice

September 11—Picnic

**October 2—Fall Show—Rain
Date October 9**

November 6 & Board Meeting

December 4

****Note - if inclement weather
check with a club office for
meeting status or our Face-
book Page or email.**

Parkland Chiropractic Center

Mark A. Bateman D.C. CCSP
Certified Cox-Flexion Distraction

4608 Route 309

Schnecksville, PA 18078

610-799-2242

610-799-2243

Equine Chiropractic Care
for over 30 years



610-217-4369

ERIC FRICK HORSESHOEING

4098 Run Rd.
New Tripoli, PA 18066



**FEED, GRAIN, FERTILIZER,
SEED, FARM & PET SUPPLIES**
Phone (610) 756-6022



www.albrightsmill.net

themill@albrightsmill.net

Donations:

Leigh Frazier

Bechtelsville Agway

Your Local Farm and Home Center

Robert A. Borneman, Owner
Samuel J. Borneman, Manager

P: 610-367-2515

F: 610-369-1832

800-492-2367

bechtelsvilleagway@hotmail.com

AGWAY

114 E. Chestnut Street
Bechtelsville, PA 19505

HUNSICKER AND SON

ABOVE GROUND POOL

EXCAVATION AND INSTALLATION

FROM OPENING TO CLOSING WE DO IT ALL

CARL HUNSICKER

610-767-2648

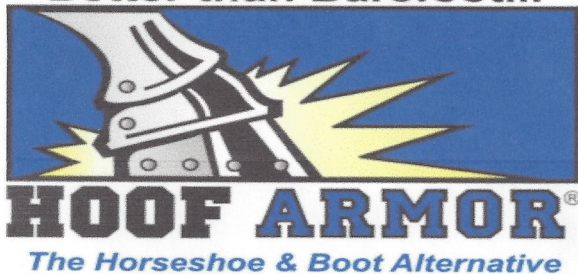
CELL 484-866-0439

FULLY INSURED

Oley Valley Feed—Sr. Trail Class Sponsor

ButterKup's Tax Prep—Jr. Bareback Equitation Class Sponsor

"Better than Barefoot..."



Brenda Jo Jones

Cell: 610-960-6441
brendajo@hoofarmor.com

David T. Jones

Cell: 610-960-6439
david@hoofarmor.com

Hoof Armor Acres
153 Groff Road
Bechtelsville, PA 19505-9137

What is Hoof Armor®?

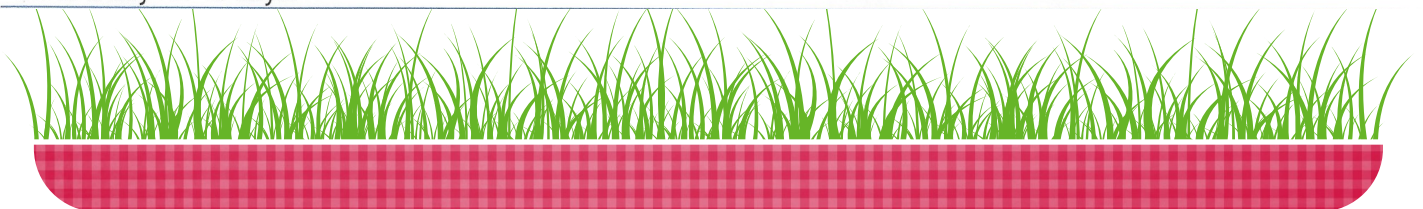
Hoof Armor, hoof protection, is a tough, durable and protective, yet flexible abrasive resistant adhesive coating used to protect the bottom of a horse's hoof from excessive wear and chipping. It is more flexible than the hoof so it doesn't restrict the natural expansion and contraction of the hoof. Hoof Armor allows natural expansion for optimum circulation, hoof health and protects the sole of the hoof while it becomes stronger and more resistant to stone bruising. The thickness of the hoof sole is the key to stone insensitivity. Applied to the sole, hoof wall bottom edge, the frog (not the commissures) and heel bulbs, it simply protects against wear, chipping and abrasion. Being flexible Hoof Armor will work with any trimming technique.

Does it protect against stone bruising?

Hoof Armor can help protect against penetration but, being flexible, may not completely prevent bruising. Hoof Armor is like moccasins for your horse.

How long does it last?

With typical use (trail riding, ring work) it lasts from trim to trim, or about six weeks. Then it is trimmed off with the excess hoof and reapplied. Riders have successfully completed 100-mile endurance rides over all types of terrain including the 2010 WEG, the 2011 President's Cup in Abu Dhabi and the Great Santa Fe Trail Race which covered 50 miles a day for 10 days.





Blue Spruce Open Horse Show & Tack/Craft Swap

644 Dogwood Dr. Alburtis, PA 18011—

www.bluespruceridingclub.com

Halter Classes: Fillies
Mares
Colts & Stallions
Geldings

Showmanship Jr.
Showmanship Sr.
Showmanship Beginner 14 & under
Showmanship Beginner 15 & over
Leadline Pleasure
Leadline Equitation
Leadline Trail
Advanced Leadline Trail
Advanced Leadline
Bareback Equitation Jr.
Bareback Pleasure Jr.
Bareback Equitation Sr.
Bareback Pleasure Sr.
Pair Class Jr.
Pair Class Sr.
Pair Class Beginner 14 & under
Pair Class Beginner 15 & over
Equitation Beginner 14 & under
Equitation Beginner 15 & over
English Equitation Jr.
English Equitation Sr.
Western Equitation Jr.
Western Equitation Sr.
Pleasure Beginner 14 & under
Pleasure Beginner 15 & over
English Pleasure Jr.
English Pleasure Sr.
Western Pleasure Jr.
Western Pleasure Sr.
Command Beginner 14 & under
Command Beginner 15 & over
English Command Jr.
English Command Sr.
Western Command Jr.
Western Command Sr.
Hunter Hack Jr. 2 fences 18"
Hunter Hack Sr. 2 fences 18"
Trail Beginner 14 & under
Trail Beginner 15 & over
Trail Jr. English & Western
Trail Sr. English & Western

\$5.00 a Class or \$35.00 for the Day
Rain or Shine

Registration Opens at 8:00 am
Ring Opens at 8:00 am—Show starts at 9:30 am

DIVISIONS

Leadline—8 yrs. old and under
Beginners 14 yrs. & under
Beginner 15 yrs. & over
Juniors—16 yrs. & under
Seniors—17 yrs. & over

Riders may not cross enter divisions
Champion and Reserve Champion to be awarded.

**FOR INFORMATION CALL SUE MOSS
610-597-6987 OR 570-345-0754**

All riders must wear a shoe with a heel.
Riders 18 yrs. and under must wear a helmet.

Clubhouse Cafe will be open all day.
Please clean up around your trailer.

Show committee has the right to combine or
cancel any class. Follow signs to show
grounds.

All Dogs on club grounds must be on a leash.

TACK/CRAFT SWAP

We are having a TACK/CRAFT SWAP at the Clubhouse
on Sunday May 8th, 2016 —Rain or Shine—same day
as our Spring Show

The space is free, just show up morning of show. If
you would like to make a donation to the club, we
would appreciate it—Thank you.

Only horse related items for sale.
Tack, clothing, barn supplies. No livestock, please.
Setup time will be available at 7:00 am to 9:00 am.
Closing when the show is over. Bring your own tables
for set up. Someone will be there to show you to your
space. We would like to invite horse/farm related
crafters besides tack. If you know of anyone that
makes any—please pass this along. We would be glad
to have them join us.



Blue Spruce Gymkhana & Trail Challenge

644 Dogwood Dr. Alburtis, PA 18011—

www.bluespruceridingclub.com

October 2, 2016

Rain-date October 9, 2016

Bend and Jump Jr.
Bend and Jump Sr.
Bend and Jump Beginner 14 & under
Bend and Jump Beginner 15 & over
Scramble Jr.
Scramble Sr.
Scramble Beginner 14 & under
Scramble Beginner 15 & over
Pole Bending Jr.
Pole Bending Sr.
Pole Bending Beginner 14 & under
Pole Bending Beginner 15 & over
Wild Lark Jr
Wild Lark Sr
Wild Lark Beginner 14 & under
Wild Lark Beginner 15 & over
Cloverleaf Barrels Jr
Cloverleaf Barrels Sr
Cloverleaf Barrels 14 & under
Cloverleaf Barrels 15 & over

Lunch Break

Costume Class during setup of Trail Course

Rider Meeting—Course Review

Trail Challenge In-hand
Trail Challenge Basic Course
Trail Rider Challenge Course

TRAIL CHALLENGE DIVISIONS:

In-Hand Course: Course consists of obstacles to be completed while leading your horse. Suitable for horses of all ages and ponies/mini's.

Basic Course: Course is basic. Suitable for all ages of horses and riders. Walk-Trot.

Trail Rider Challenge Course: Course is scored and timed. Obstacles are worth 10 points each. It includes loping and more challenging obstacles. Open to all ages and skill levels of horse and rider.

\$5.00 a Gymkhana Class or \$35.00 for the Day including the Trail Challenge
Trail Challenge only \$10.00

Registration at 8:00 am
Ring Opens at 8:00 am
Show starts at 9:30 am

GYMKHANA DIVISIONS

Beginners 14 yrs. & under
Beginner 15 yrs. & over
Juniors—16 yrs. & under
Seniors—17 yrs. & over

Riders may not cross enter divisions
Champion and Reserve Champion to be awarded for Gymkhana Classes.

FOR INFORMATION CALL SUE MOSS
610-597-6987 OR 570-345-0754

All riders must wear a shoe with a heel.
Riders 18 yrs. and under must wear a helmet.

Clubhouse Cafe will be open all day.
Please clean up around your trailer.

Show committee has the right to combine or cancel any class. Follow signs to show grounds.

All Dogs on club grounds must be on a leash.



Blue Spruce Riding Club
644 Dogwood Dr.
Alburtis, PA 18011

Trail Obstacle Practice Day

Blue Spruce Riding Club, Alburtis, PA

Sunday, August 28, 2016 9:00 AM till 2:00 PM

OPEN TO NON-MEMBERS

Mini Clinic on how to navigate different obstacles

Practice on 15 different obstacles

Great way to get your horse accustomed to new obstacles

Bridges, pool noodles, mailbox, teeter-totter, pinwheel, back through and trot overs, gate, drag, ball push, side-pass, etc.

Cost is \$5.00 for club members and \$10.00 for non-members per horse.

This practice will help to get you ready for our Trail Challenge on October 2, 2016.

Contact Charmaine for more info: cropeter@dejazzd.com or 610-310-7984 or check our Facebook page—Blue Spruce Riding Club, Alburtis, PA. You can see some of the pictures from last Oct's Trail Challenge. We have 3 divisions—In Hand, Walk/Trot and Open. Come on out and give this a try.

Our Website: <http://www.bluespruceridingclub.com/>



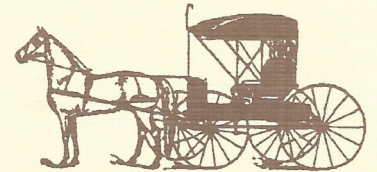
THANK YOU

A big special thank you to our announcer Ed Hertzog for his humor, wit and great announcing at all our shows. Great Job.

Also a big Thank you and Show of Appreciation to Lois Dries for running our kitchen and all the volunteers who make this show possible from parking, to the kitchen help, kitchen donations and the ring crew.

LEID

Shoes & Saddlery



690 Kohler Road
Kutztown, PA 19530

Hours: Mon - Fri. 8-7
Sat. 8-5

(610) 682-2760

*Shoe & Boot Repairs
Shoes & Boots
Harness • Tack • Saddles
Leather Repairs
Horse Feed & Supplies*

Check our website:
www.bluespruceridingclub.com

and our Facebook Page:

Blue Spruce Riding Club,
Alburtis PA

**Happy Trails to you.
Hope to see you on the Trail.**

