

May 5, 2019 - July 14, 2019 - Sept 22, 2019



Blue Spruce Riding Club 2019

www.bluespruceridingclub.com



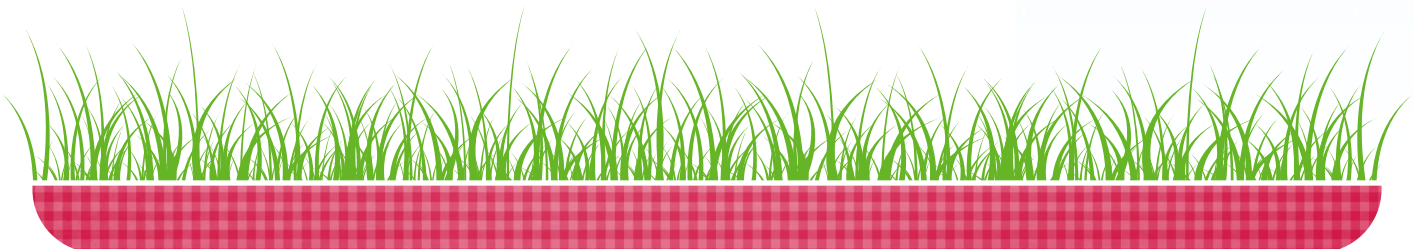
**644 DOGWOOD DRIVE
ALBURTIS, PA 18011**

Inside

About Our Club...	2
Officers	2
Event Schedule...	5
Spring Show Flyer	7
Mini Horse Flyer.....	8
Obstacle Practice Flyer....	9
Trail Obstacle Show ...	11

Important Dates

07/14	Mini Show & Gymkhana
08/25	Trail Obstacle Practice
09/22	Trail Challenge



2019 BSRC Officers:

President: Open Office

Secretary:

Donna Christ—
610-432-1628

Treasurer: Open Office

Maintenance: Open Office

Show Chairman:

Sue Moss—570-345-0754

**Newsletter Editor &
Trail Boss—**

Charmaine Ropeter—
610-754-7679

Webmaster:

Theresa Reabold—
610-826-5309

Board of Directors 2019:

Chairman of the Board:

Pat Zentner—
610-845-2205

2019 Board Members:

Tina Hunsicker—
610-398-2257

Wayne Burrows—
610-216-4365

Jean Hunsicker—
610-608-5156

Open Board Position

About our Club

Dear Sponsors, Patrons and Friends,

We would like to introduce ourselves to you. We are the Blue Spruce Riding Club, Inc. Our goals, as a club, are to gather together people who have a common interest in horses and horseback riding, and to further that interest by the exchange of information and ideas, and the scheduling of meetings, rides and horse shows.

Our clubhouse is located on Dogwood Drive, Alburtis, PA approximately two miles north of Huffs Church. Meetings are usually held the first Sunday of the month, except July, starting at 7:00 pm. Prospective members and guests are welcome to attend. Our Trail News newsletter is sent to members following each meeting.

Blue Spruce is a trail riding club and we have rides, on public land, in various locations the third Sunday of the month. The rides are led by someone familiar with the trails where they are held. This provides horse owners with the opportunity to get acquainted with other trail riders and to enjoy having a variety of places to ride.

Our fund-raising activities are a horse show in the spring and a mini show & gymkhana show in July and trail challenge in the fall. These activities depend on the volunteer efforts of the members and we encourage new members to lend their time and talents to these events to insure the continuation of Blue Spruce Riding Club into the future.

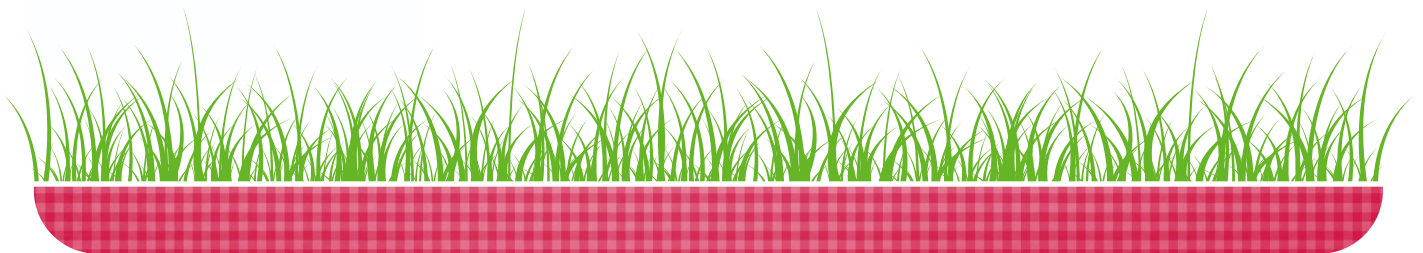
Occasionally we have educational programs at our monthly meetings and social events, such as a night out dinner at a local restaurant.

The annual dues for a single member is \$20.00 and dues for family membership are \$25.00. Family membership include children at 17 and under. Those age 18 and over must be members in their own right. If you are interested in joining our club please contact any of the officers or board members listed to the left .

We would like to give a special thanks to all of our horse show sponsors and patrons. Without your support our horse shows would not be possible. We wish you well in the coming year and look forward to your continued support and friendship.

Sincerely,

Members of the Blue Spruce Riding Club, Inc.

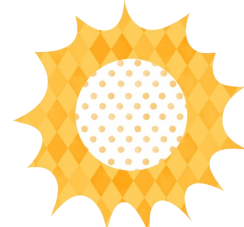


Blue Spruce Grounds

The land Blue Spruce Riding Club uses for its show and gymkhana is private property. For this reason we stress the importance of making sure the property is left the way you found it. Please be courteous and clean up after your

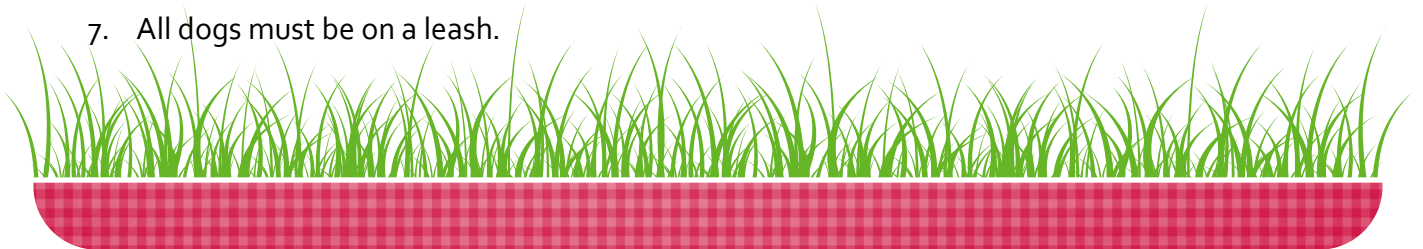
horse and yourself so we may continue to have shows here.

Thank You for your participation



Blue Spruce Riding Club, Inc. Horse Show & Gymkhana Rules & Regulations

1. The ring will be available for warm-up until 9:00 am
2. Horses may not be ridden at a gait faster than a trot outside of the ring.
3. Horses must walk through gate upon entering and exiting ring.
4. Abusive treatment to horses will not be permitted
5. Hard hats are **REQUIRED** for riders 16 years of age and younger.
6. Boots or shoes with heels are **MANDATORY FOR ALL RIDERS.**
7. All dogs must be on a leash.
8. Show committee reserves the right to combine and/or cancel classes.
9. The decision of the Show Chairperson is FINAL.
10. **NO DRUGS or ALCOHOLIC BEVERAGES ARE PERMITTED ON THE GROUNDS**
11. Trash receptacles are located on the grounds. **PLEASE USE THEM & RECYCLE.**
12. Hay and manure are to be cleaned up by the responsible owner. Wheelbarrow and forks are available.





ERB & HENRY EQUIP., INC.

22-26 Henry Avenue
New Berlinville, Pennsylvania 19545
(610) 367-2169 Ext. 24
Fax (610) 367-6715
www.erbhenry.com

LAWRENCE R. "BUTCH" CLAUSS, JR.

Sales Manager

email@erbhenry.com • Cell: (484) 576-9505



Thanks to Erb & Henry Equipment for donating the use of a tractor for the Trail Practice and Trail Challenge setups.

Please let our sponsors know that you saw them here when doing business.

STEVEN R. DADDONA

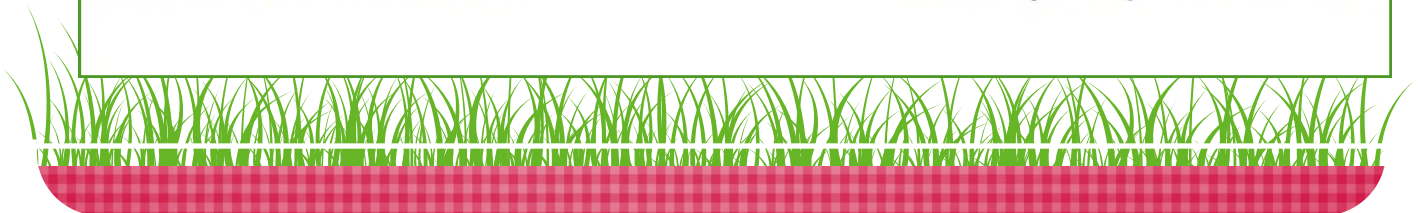
Certified Farrier



Trims, Hot & Cold Shoeing, Orthopedic Horse Shoeing
Member of P.P.F.A. and A.F.A.

P.O. Box 37
Bernville, PA 19506

Call: (610) 488-7492



2019 BSRC Schedule

General Meetings: 7:00 PM
Board Meetings—6:00 pm

May 5—Spring Horse Show

June 2—Board Meeting

July 14—Mini Show

August 4

August 25 Obstacle Practice

September 8 Picnic

Sept 22 Trail Obstacle

Practice

October 6

November 3—Board Meeting

December 1—Cookie Exchange

****Note - if inclement weather check with a club officer for meeting status, on our Facebook Page or email.**

Trail Rides are usually the Third Sunday of the Month.



Parkland Chiropractic Center

Mark A. Bateman D.C. CCSP
Certified Cox-Flexion Distraction

4608 Route 309

Schnecksville, PA 18078

610-799-2242

610-799-2243

Equine Chiropractic Care
for over 30 years



610-217-4369

ERIC FRICK HORSESHOEING

4098 Run Rd.
New Tripoli, PA 18066

KUHNS

septic and excavating

Septic System Installation & Repairs
General Excavation • Trenching • Grading

610-379-0410

Randy Kuhns
owner/operator

Shop: S.W.33rd St, Allentown, PA

Office: 585 Elm Street, Lehigh, PA 18235

Fax: 610-379-0410
PA013067





**Dr. Jessica
Rexroth**

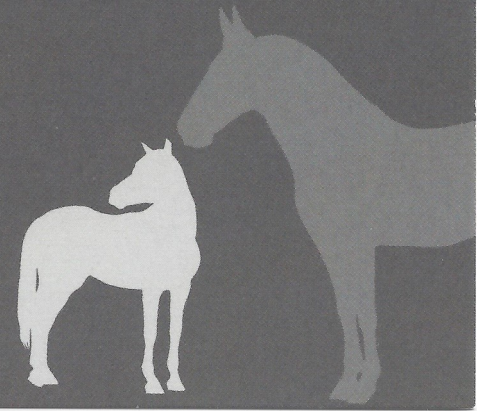
Equine Veterinarian

Licensed in PA NJ & FL

jarexroth@drjessvet.com

www.drjessvet.com

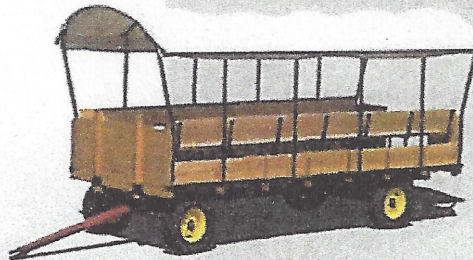
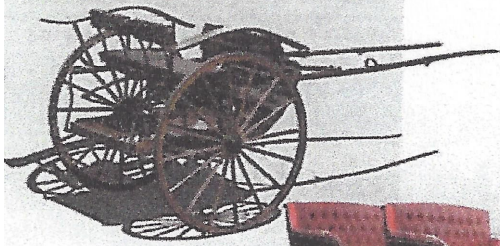
484-447-6945



**MEADOW
BROOK
CARTS**

SLEIGHS

WAGON BEDS

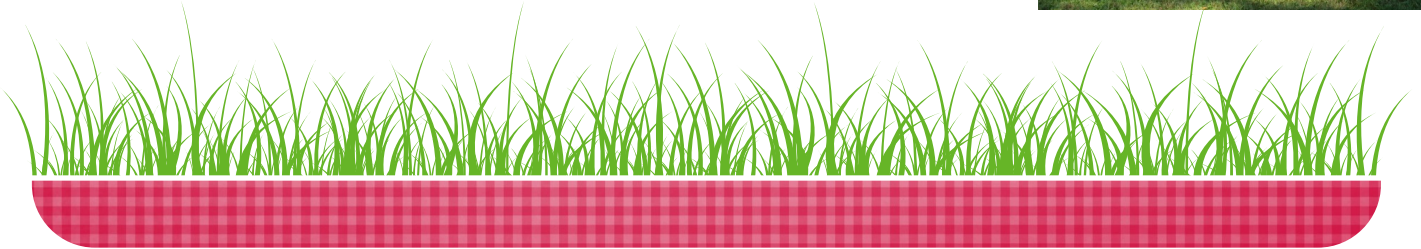


**Shady Lane
Wagons**

*New Carts & Wagons Made To Order
Over 100 Horse-Drawn Vehicles In Stock
Repair Work - Restorations*

717-354-8970
717-355-0637 FAX
192 AMISHTOWN ROAD
NEW HOLLAND, PA 17557

**Delivery Service
Available**





Blue Spruce Open Horse Show & Tack/Craft Swap
644 Dogwood Dr. Alburtis, PA 18011—www.bluespruceridingclub.com

Rescheduled for June 23, 2019

Halter Classes: Fillies
Mares
Colts & Stallions
Geldings

Showmanship Jr.
Showmanship Sr.
Showmanship Beginner 14 & under
Showmanship Beginner 15 & over

Leadline Pleasure
Leadline Equitation
Leadline Trail
Advanced Leadline Trail
Advanced Leadline

Equitation Beginner 14 & under
Equitation Beginner 15 & over
English Equitation Jr.
English Equitation Sr.
Western Equitation Jr.
Western Equitation Sr.
Pleasure Beginner 14 & under
Pleasure Beginner 15 & over
English Pleasure Jr.
English Pleasure Sr.
Western Pleasure Jr.
Western Pleasure Sr.
Command Beginner 14 & under
Command Beginner 15 & over
English Command Jr.
English Command Sr.
Western Command Jr.
Western Command Sr.
Hunter Hack Jr. 2 fences 18"
Hunter Hack Sr. 2 fences 18"
Trail Beginner 14 & under
Trail Beginner 15 & over
Trail Jr. English & Western
Trail Sr. English & Western

\$6.00 a Class or \$40.00 for the Day
Rain or Shine

Registration Opens at 8:00 am
Ring Opens at 8:00 am—Show starts at 9:30 am

DIVISIONS

Leadline—8 yrs. old and under
Beginners 14 yrs. & under
Beginner 15 yrs. & over
Juniors—16 yrs. & under
Seniors—17 yrs. & over

Riders may not cross enter divisions
Champion and Reserve Champion to be
awarded.

FOR INFORMATION CALL SUE MOSS
610-597-6987 OR 570-345-0754

All riders must wear a shoe with a heel. Riders 18
yrs. and under must wear a helmet.

Clubhouse Cafe will be open all day.
Please clean up around your trailer.

Show committee has the right to combine or cancel
any class. Follow signs to show grounds.

All Dogs on club grounds must be on a leash.

TACK & CRAFT Swap

We are having a TACK/CRAFT SWAP at the Clubhouse
on Sunday same day as our Spring Show
The space is free, just show up morning of show. If you
would like to make a donation to the club, we would
appreciate it—Thank you.

Only horse related items for sale. Tack, clothing, barn
supplies. No livestock, please. Setup time will be availa-
ble at 8:00 am to 9:00 am. Closing when the show is
over. Bring your own tables for set up. Someone will be
there to show you to your space. We would like to in-
vite horse—farm related crafters besides tack. If you
know of anyone that makes any—please pass this
along. We would be glad to have them join us.



Blue Spruce Open Horse Show & Tack/Craft Swap

644 Dogwood Dr. Alburtis, PA 18011—www.bluespruceridingclub.com

July 14th, 2019

1. Showmanship—Youth
2. Showmanship—Adult
3. Halter Fillies/Mare—Youth
4. Halter Fillies/Mare—Adult
5. Halter Geldings/Stallions—Youth
6. Halter Geldings/Stallions—Adult
7. Showmanship Peewee
8. Halter Peewee
9. Halter Solid Color—Youth
10. Halter Solid Color—Adult
11. Halter Multi Color—Youth
12. Halter Multi Color—Adult
13. Champion Halter (Winner of Classes 3, 4, 5, 6, 9, 10, 11, 12)
14. Jumping—Youth
15. Jumping—Adult
16. Long Line/Cones—Youth
17. Long Line—Cones—Adult
18. Reinmanship—Youth
19. Pleasure Driving—Youth
20. Reinmanship—Adult
21. Pleasure Driving—Adult
22. Driving Cones—Youth
23. Driving Cones—Adult
24. Multi-hitch—Adult & Youth
25. In-Hand Trail—Youth
26. In-Hand Trail—Adult
27. Costume—Youth
28. Costume—Adult



\$6.00 a Class or \$50.00 for the Day

Rain or Shine

Registration Opens at 8:00 am

Ring Opens at 8:00 am—Show starts at 9:00 am

DIVISIONS

Peewee—under age 8

Youth—age 8 to 18

Adult—age 19 and over

Riders may not cross enter divisions
Champion and Reserve Champion to be
awarded for Youth & Adult.

FOR INFORMATION CALL SUE MOSS

610-597-6987 OR 570-345-0754

All riders must wear a shoe with a heel. Riders 18 yrs. and under must wear a helmet.

Clubhouse Cafe will be open all day.
Please clean up around your trailer.

Show committee has the right to combine or cancel any class. Follow signs to show grounds.

All Dogs on club grounds must be on a leash.

TACK & CRAFT Swap

We are having a TACK/CRAFT SWAP at the Clubhouse. The space is free, just show up morning of show. If you would like to make a donation to the club, we would appreciate it—Thank you.

Only horse related items for sale. Tack, clothing, barn supplies. No livestock, please. Setup time will be available at 7:00 am to 9:00 am. Closing when the show is over. Bring your own tables for set up. Someone will be there to show you to your space. We would like to invite horse—farm related crafters besides tack. If you know of anyone that makes any—please pass this along. We would be glad to have them join us.



Blue Spruce Riding Club
644 Dogwood Dr.
Alburtis, PA 18011

Trail Obstacle Practice Day

Blue Spruce Riding Club, Alburtis, PA

Sunday, August 25, 2019 9:00 AM till 2:00 PM



OPEN TO NON-MEMBERS

Mini Clinic on how to navigate different obstacles

Practice on more than 15 different obstacles

Great way to get your horse accustomed to new obstacles

Bridges, pool noodles, mailbox, teeter-totter, pinwheel, back through and trot overs, gate, drag, ball push, side-pass, etc.

Cost is \$10.00 for club members and \$15.00 for non-members per horse.

This practice will help to get you ready for our Trail Challenge on September 22, 2019.

Contact Charmaine for more info: cropeter@dejazzd.com or 610-310-7984 or check our Facebook page—Blue Spruce Riding Club, Alburtis, PA. You can see some of the pictures from last Sept's Trail Challenge. We have 4 divisions—In hand - Mini & Horse, Walk/Trot and Open. Come on out and give this a try.

Our Website: <http://www.bluespruceridingclub.com/>



Phone 610-965-4282
610-967-3220

Fax 610-965-6005
www.davidselectricinc.com

DAVID'S ELECTRIC, Inc.

Sales & Service Since 1946

WHIRLPOOL ~ KITCHENAID ~ ~ FRIEDRICH
MAYTAG ~ AMANA ~

PAT ZENTNER

Representative



314 Main Street
Emmaus, PA 18049

David's Electric located in Emmaus PA proudly serving Lehigh County and surrounding areas. We offer the best selection in Ranges, Cooktops, Wall Ovens, Refrigerators, Microwave Ovens, Freezers, Dishwashers, Washers, Dryers. We have a wide variety in brands such as Amana, KitchenAid, Maytag, and Whirlpool. Come visit our store today!

Mon. 9:00 AM - 5:30 PM
Tue. 9:00 AM - 5:30 PM
Wed. 9:00 AM - 5:30 PM
Thu. 9:00 AM - 5:30 PM
Fri. 9:00 AM - 7:00 PM
Sat. 9:00 AM - 1:00 PM
Sun. Closed

TREATING YOUR FAMILY LIKE OUR FAMILY

Please let our sponsors know that you saw them here when doing business.



LLC



FEED, GRAIN, FERTILIZER,
SEED, FARM & PET SUPPLIES

Phone (610) 756-6022



PIONEER.
A DUPONT COMPANY

www.albrightsmill.net

themill@albrightsmill.net

Albright's Mill

Address and Contact:

9927 Kistler Valley Road

Kempton, PA 19529

Phone: 610-756-6022

Fax:

610-756-3483

Email: themill@albrightsmill.net

Business Hours:

Mon - Fri 7:30 am - 5:00 pm

Sat 7:30 am - 12:00 pm

Sun Closed

Providing quality products and services since 1964.

Providing services to our customers has always been important at Albright's Mill LLC. Whether you are buying or selling grain; feeding livestock or pets; planting fields or a backyard garden, our goal is to provide quality products and dependable service. Albright's Mill understands how much you've invested during the growing season. We offer grain drying & storage facilities and have grown to a storage capacity of nearly 1 million bushels



Blue Spruce Trail Obstacle Challenge

644 Dogwood Dr. Alburtis, PA 18011
www.bluespruceridingclub.com

September 22, 2019

Rain-date September 29, 2019

Rider Meeting—Course Review
before each Class

Trail Challenge only \$15.00

Trail Challenge In-hand—Mini Class

Registration at 8:00 am
Ring Opens at 8:00 am
Show starts at 9:00 am

Trail Challenge In-hand—Horse Class

Trail Challenge Basic Course

Trail Rider Challenge Course

TRAIL CHALLENGE DIVISIONS:

In-Hand Courses: Course consists of obstacles to be completed while leading your horse or mini. Suitable for horses and handlers of all ages.

Basic Course: Course is basic. Suitable for all ages of horses and riders. Walk-Trot.

Trail Rider Challenge Course: Course includes loping and more challenging obstacles. Open to all ages and for more advanced skill level of horse and rider.

FOR INFORMATION CALL SUE MOSS
610-597-6987 OR 570-345-0754

TACK/CRAFT SWAP

We are having a TACK/CRAFT SWAP at the
Clubhouse

All riders must wear a shoe with a heel. Riders 18 yrs. and under must wear a helmet.

The space is free, just show up morning of show. If you would like to make a donation to the club, we would appreciate it—Thank you.

Clubhouse Cafe will be open all day.

Only horse related items for sale.

Please clean up around your trailer.

Tack, clothing, barn supplies. No livestock, please. Setup time will be available at 7:00 am to 9:00 am. Closing when the show is over. Bring your own tables for set up. Someone will be there to show you to your space. We would like to invite horse/farm related crafters besides tack. If you know of anyone that makes any—please pass this along. We would be glad to have them join us.

Show committee has the right to combine or cancel any class. Follow signs to show grounds.

All Dogs on club grounds must be on a leash.



6807 Weiss Road
New Tripoli, PA 18066
PH: 610-298-2520

FERDINAND G. VISINTAINER, V.M.D.
KIMBERLY A. KISH, V.M.D.
HILARY PALMEIRO, V.M.D.
KELLY TREXLER-WERTMAN, D.V.M., C.C.R.P.
STACEY L. SCANLON, D.V.M.

WEB: www.cdvh.com

E-MAIL: info@cdvh.com

Class Sponsors

R&R Stables—Ron & Rosaria Angstadt—Halter Classes

Pat Zentner—Showmanship Classes

Tina Hunsicker—Mini Champion Halter Class

Tera Forbeck-Ramig DVM

www.allpointsequine.com

2227 Albright Ave
Allentown, PA 18104
Phone: 610-351-1404
info@allpointsequine.com



**ALL
POINTS
EQUINE**

large animal veterinary services



MEADOW BROOK FARMS

Hay ~ Straw ~ Bedding

- ★ Top Quality Local & Western Hay
- ★ All flavors and sizes with delivery in the tri-state area
- ★ Ask about Hay containers for the ultimate storage solution

Manure Removal



www.mbfhav.com

We are located in beautiful Bucks County, Pennsylvania and raise a variety of crops and animals. Meadow Brook Farms specializes in hay forages, straw and a variety of bedding products. We cover all markets including equine, dairy, beef and construction stabilization. Superior quality, variety and excellent service is at the heart of our focus.

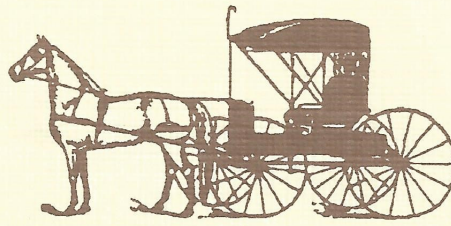
LEID

Shoes & Saddlery

690 Kohler Road
Kutztown, PA 19530

Hours: Mon - Fri. 8-7
Sat. 8-5

(610) 682-2760



Shoe & Boot Repairs
Shoes & Boots
Harness • Tack • Saddles
Leather Repairs
Horse Feed & Supplies

**COME IN AND
SEE US TODAY**

for lower-than-average prices on high-quality horse supplies and products. Storefront parking is available!



Check our website:
www.bluespruceridingclub.com

and our Facebook Page:

Blue Spruce Riding Club,
Alburtis PA

Happy Trails to you.

Hope you join us on a Trail ride.

